

PROFILE

PRINCIPAL DIMENSIONS :

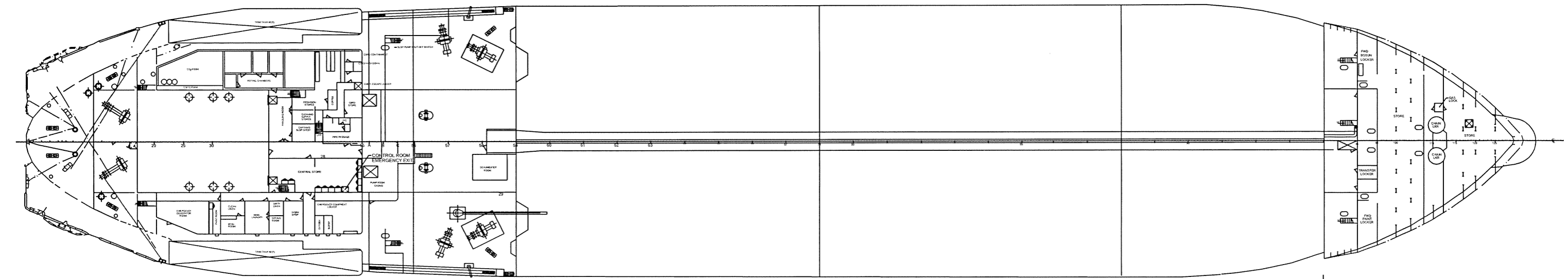
LENGTH O.A	225.06 M
LENGTH B.P	213.9 M
BREADTH	41.15 M
DEPTH	13.55 M
TONNAGE (REGISTERED)	38571 GROSS 11571 NET

MACHINERY :

MAIN DIESEL ENGINE	1 X 19700 bph @ 100 RPM
(2 CYCLE)	
AUXILIARY ENGINE	3 X 1120 KVA @ 720 RPM
	1 X 400 V/ 60HZ @ 900 RPM
EMERGENCY GENERATOR	1 X 37.5 KVA

CAPACITIES :

WATER BALLEST	88823.5 CU.M
DEADWEIGHT ON SUMMER LOADLINE	52092 TONS
FUEL OIL	3087.22 CU.M
DIESEL OIL	568.31 CU.M
FRESH WATER	612.2 TONS
COMPLEMENT	19
DESIGN SEA SPEED	16 KNOTS
AVERAGE SPEED	14 KNOTS



CARGO DECK

MAIN DECK

VIATECH ENGINEERING LTD.		
TITLE: AMERICAN CORMORANT GENERAL ARRANGEMENT		
DRAWN BY: YHL	CHECKED BY:	PROJECT NO.
DATE: 04/29/05	DATE: 04/29/05	SCALE: NOT TO SCALE
DWG NO. GA-290405-1		2 REV